

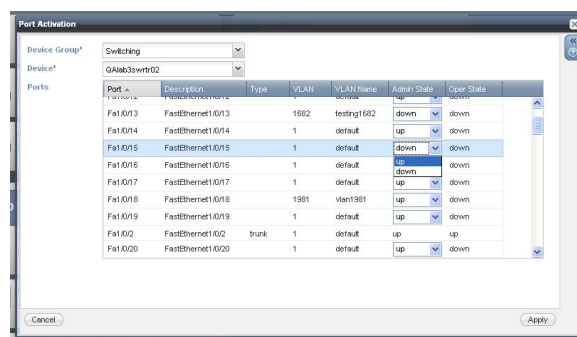
### Business Benefits

- Increase team efficiency by leveraging automation between DHCP, DNS, IPAM and network infrastructure
- Reduce risk from rogue DHCP servers through detection and isolation
- Eliminate truck rolls and wasted time with bare metal installation through remote capabilities
- Facilitate collaboration by empowering multiple teams to handle daily tasks together through enhanced control that bridges the gap between them
- Increase staff effectiveness and communication by eliminating unnecessary handoffs and manual processes
- Improve time to implementation and time to value by reducing delays and bottlenecks in workflows

### Automating and Simplifying Common Network Tasks

Common networking tasks that appear “simple and fast” still require extensive manual effort and multiple handoffs that all too often lead to human error and excessive delays. Turning a port up or down or reconfiguring a VLAN can take hours or even days. Rogue DHCP servers are often discovered too late to preempt problems, and bare metal provisioning can be a tedious task that requires specialized engineers to travel to remote sites. When relying on multiple teams and processes with numerous steps, IT teams inevitably spend more time waiting than achieving.

The Trinzic Automation Engine from Infoblox is the only solution on the market that provides seamless integration and automation between your DNS, DHCP, IPAM (DDI) and infrastructure device configurations within a single user interface. The purpose-built Tasks Board allows a single user to select a common task — such as activating a switch port or VLAN re-assignment — and complete it quickly and effectively.



*Single interface allows simple and fast activation or deactivation of a port.*

Initiating tasks through a single interface, authorized staff can make common changes immediately, thereby eliminating the need for elaborate, custom scripts and manual processes completely.

For more complex jobs, such as integrated device provisioning and rogue DHCP server isolation, the Trinzic Automation Engine delivers triggered, closed-loop DDI automation. The user-based access rights ensure that only approved personnel are authorized to make defined changes. By empowering the teams, the Trinzic Automation Engine increases staff efficiency and eliminates multiple handoffs and inordinate delays.

### Simplifying Changes with the Automation Tasks Board

Most network administrators must regularly make numerous common changes. The Automation Tasks Board allows you to complete many of the most common changes quickly and easily from the same interface that you use to manage your DNS/DHCP and IP addresses. Once you initiate the task, the Trinzic Automation Engine handles all of the requirements in the background, and when completed, reports the status.

Examples of user-initiated network automation tasks include:

- Port activation — with a single click, enable or disable switch ports
- VLAN re-assignment — move ports from one VLAN to another
- Network provisioning — create a new network, configure the network device automatically and update DHCP configuration

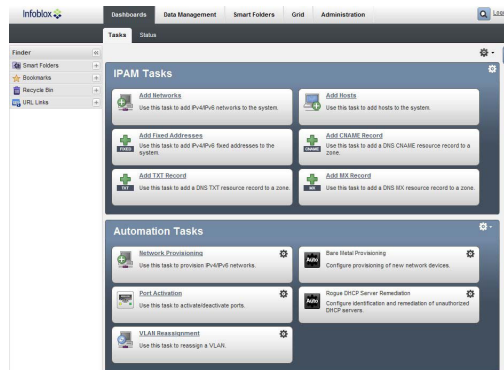
## DATASHEET

### Key Features

- Intuitive Tasks Board for automation of common networking tasks
- User-initiated tasks, including port provisioning, VLAN assignment and network creation
- Automatically identify rogue DHCP servers with triggered isolation options
- Bare metal provisioning for new devices leveraging intuitive GUI
- Seamless integration between Infoblox Trinzic Enterprise and Trinzic NetMRI or Trinzic Network Automation
- Customizable options for unique tasks for individual organizations
- Custom automation engine with job approval and scheduling
- Embedded multi-vendor support and available extensible device support
- Switch port management visibility for end-devices, availability, interface usage history and MAC address location history
- Network discovery and automated IPAM configuration and sync

Trinzic Enterprise also simplifies IP address management with IPAM Tasks, including:

- Add networks — quickly add IPv4/IPv6 to the IPAM system
- Add fixed addresses — add fixed IPv4/IPv6 addresses simply
- Add TXT record — add a DNS TXT resource record to a zone
- Add hosts — with a simple interface, add hosts to the system
- Add CNAME record — easily add a specific DNS CNAME resource record
- Add MX record — quickly update a DNS MX resource record to a zone

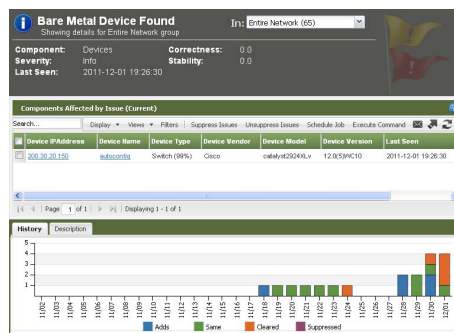


Complete common IPAM and Network Automation requirements with intuitive Tasks Board.

### Improved Efficiency and IT Agility with Automated Bare Metal Provisioning

Many IT organizations utilize standard devices for new deployments, but they still require truck rolls with expensive IT staff to do the installation and provisioning. Typically, at least two network staffers are needed for each deployment — one on site and the other at headquarters testing the implementation.

The Bare Metal Provisioning Task within the Trinzic Automation Engine can greatly reduce the time, manpower and effort needed to deploy each new device. Once the device template is built, a single user can implement new installs from the web-based GUI. The system automatically detects the new device, and the Tasks Board enables the user to push the new configuration to the device remotely without the need to be on site. This automated one-step process minimizes possible human error, eliminates wasted time and greatly reduces the cost of new deployments.

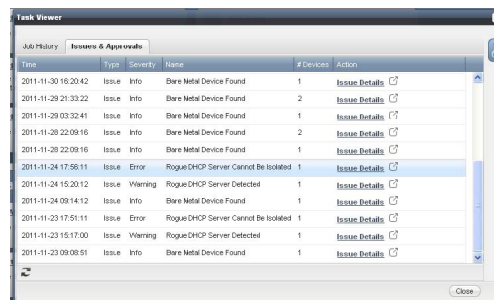


Eliminate truck rolls by automatically detecting new bare metal installs, and employ automation to provision the device correctly and remotely through the interface.

### Reduce Risk

Trinzic Automation Engine helps you dramatically reduce the risk of errors while significantly increasing network availability. One of its key capabilities is isolating a rogue DHCP server automatically, thereby ensuring network availability. An unauthorized or unknown DHCP server can create havoc for core applications and services. Too often, over-burdened IT teams simply do not have the time to search proactively for risky devices and, instead, only find out too late when damage is underway.

The Trinzic Automation Engine automatically discovers network components, including DHCP servers — either new devices or recently-enabled DHCP. The system continuously checks against managed and authorized servers, and automatically flags rogue servers upon discovery. In addition to detecting the rogue server, the Trinzic Automation Engine can either automatically isolate it or require user approval to quarantine the device, depending on the pre-set user preference.



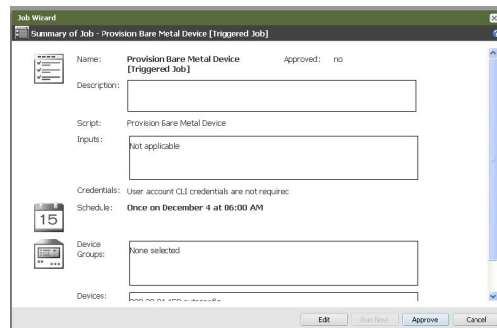
Time	Type	Severity	Name	# Devices	Action
2011-11-30 16:20:42	Issue	Info	Bare Metal Device Found	1	<a href="#">Issue Details</a>
2011-11-29 21:33:22	Issue	Info	Bare Metal Device Found	2	<a href="#">Issue Details</a>
2011-11-29 03:32:41	Issue	Info	Bare Metal Device Found	1	<a href="#">Issue Details</a>
2011-11-28 22:09:16	Issue	Info	Bare Metal Device Found	2	<a href="#">Issue Details</a>
2011-11-28 22:09:16	Issue	Info	Bare Metal Device Found	1	<a href="#">Issue Details</a>
2011-11-24 17:58:11	Issue	Error	Rogue DHCP Server Cannot Be Isolated	1	<a href="#">Issue Details</a>
2011-11-24 15:20:12	Issue	Warning	Rogue DHCP Server Detected	1	<a href="#">Issue Details</a>
2011-11-24 09:14:12	Issue	Info	Bare Metal Device Found	1	<a href="#">Issue Details</a>
2011-11-23 17:51:11	Issue	Error	Rogue DHCP Server Cannot Be Isolated	1	<a href="#">Issue Details</a>
2011-11-23 15:17:00	Issue	Warning	Rogue DHCP Server Detected	1	<a href="#">Issue Details</a>
2011-11-23 09:08:51	Issue	Info	Bare Metal Device Found	1	<a href="#">Issue Details</a>

*Automatically identify new DHCP servers, and then cross reference them with authorized devices and trigger isolation options for rogue servers.*

## Increase Staff Effectiveness and Safely Delegate Tasks

A common complaint from IT executives is that highly trained and expensive staff are often overburdened with basic tasks that prevent them from focusing on other more important — and sometimes critical — issues. Making basic changes to routers and switches is a perfect example of a waste of valuable staff resources. Since network availability is essential, you need a high level of expertise to see that routine changes are made effectively and correctly, but the overwhelming number of change requests these days is flooding the queue and tying up and taxing your best people.

Trinzic Automation Engine helps redirect the overflowing requests from your more experienced network staff to other designated staff, such as empowering the operations or support team without having to submit tickets requiring a network engineer to make the change manually.



**Job Wizard**  
Summary of Job - Provision Bare Metal Device [Triggered Job]

Name: Provision Bare Metal Device Approved: no

Description: [Text Box]

Script: Provision Bare Metal Device

Inputs: [Text Box]

Credentials: User account CLI credentials are not required

Schedule: Once on December 4 at 06:00 AM

Device Groups: None selected

Devices: [Text Box]

Buttons: Edit, Run Now, Approve, Cancel

*Maintain control by using role-based job approval to authorize specific individuals to complete common tasks, and to do so faster and with fewer hand-offs.*

## Improve Time to Implementation and Value

Over the past decade as applications and networks become more complex and critical, more emphasis has been put on time to implementation and time to value. Trinzic Automation Engine eliminates the extensive delays caused by reliance on manual processes among multiple teams, and replaces those outmoded approaches with automation to help you achieve your time to implementation and time to value goals.

### Infoblox Product Warranty and Services

The standard hardware warranty is for a period of one year. The system software has a 90-day warranty that will meet published specifications. Optional service products are also available that extend the hardware and software warranty. These products are recommended to ensure the appliance is kept updated with the latest software enhancements and to ensure the security and availability of the system. Professional services and training courses are also available from Infoblox. Information in this document is subject to change without notice. Infoblox Inc. assumes no responsibility for errors that appear in this document.