

## DATASHEET

### Business Benefits

- Sync dynamic network component information with the leading IPAM solution within a single interface
- Eliminate out-of-date and incomplete network information via up-to-date auto-discovery of network elements and respective connections
- Avoid overpayment for renewal maintenance by tracking actual devices connected to the network
- Reduce troubleshooting time by visualizing the complex relationships between the devices and the network
- Improve security and compliance with continuous monitoring, new device detection and audit-based reporting

### Ensuring Up-to-Data and Correct IP Address and Network Information

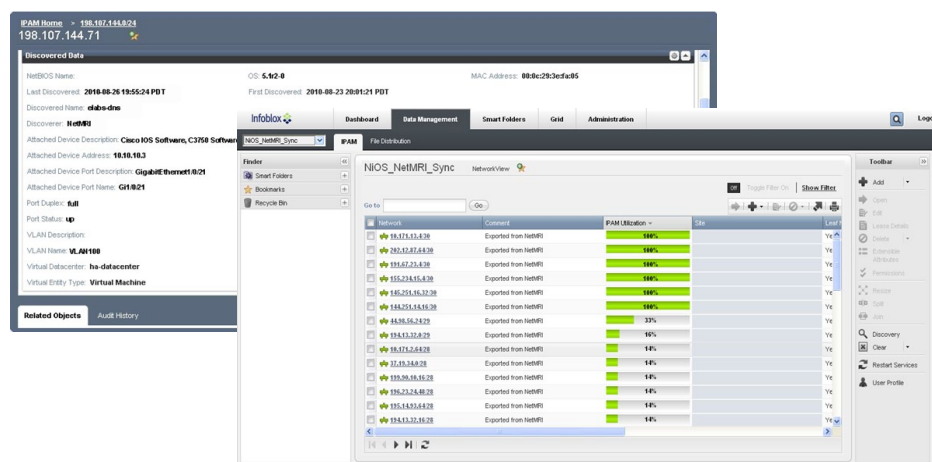
Virtualization, cloud computing, IPv6, mergers & acquisitions and organic growth have all increased network complexity at an alarming rate. Recent studies show that over 70% of IT staff time is now spent doing unplanned work, especially troubleshooting, and a large percentage of those hours is tied to out-of-date, incorrect information stored across multiple spreadsheets or databases.

Unconnected tools, databases and spreadsheets that leave gaping chasms between IP addresses and network infrastructure information make troubleshooting and management downright impossible tasks. Over-burdened IT staffs are in immediate need of a single, comprehensive view that bridges IP addresses to detailed network infrastructure information.

Trinzic IPAM Insight automates network discovery with topology views and with rich, detailed, physical and logical information from Layer 2 and Layer 3, respectively. Trinzic IPAM Insight finds multi-vendor routers, switches and other network infrastructure devices, and provides views of network components, including VLANs, routes, routing tables, HSRP pairs, subnets, OSs, models and more. The network information automatically syncs in real time with the Infoblox IP address management database. The result is an authoritative source for IPAM and network information with powerful visualization and maps.

### Sync Network Discovery with IPAM

Too often, IT organizations try to cobble together usable information from multiple spreadsheets or databases with out-of-date information for both IP address management as well as network inventory visibility.



The automated network discovery syncs with the Infoblox IPAM solution to ensure up-to-date information

Infoblox IP Address Management is the leading solution for centrally managing IP service infrastructure within a single console. The addition of Trinzic IPAM Insight integrates the auto-discovery of multi-vendor network devices with continuous updating of network end-points.

## DATASHEET

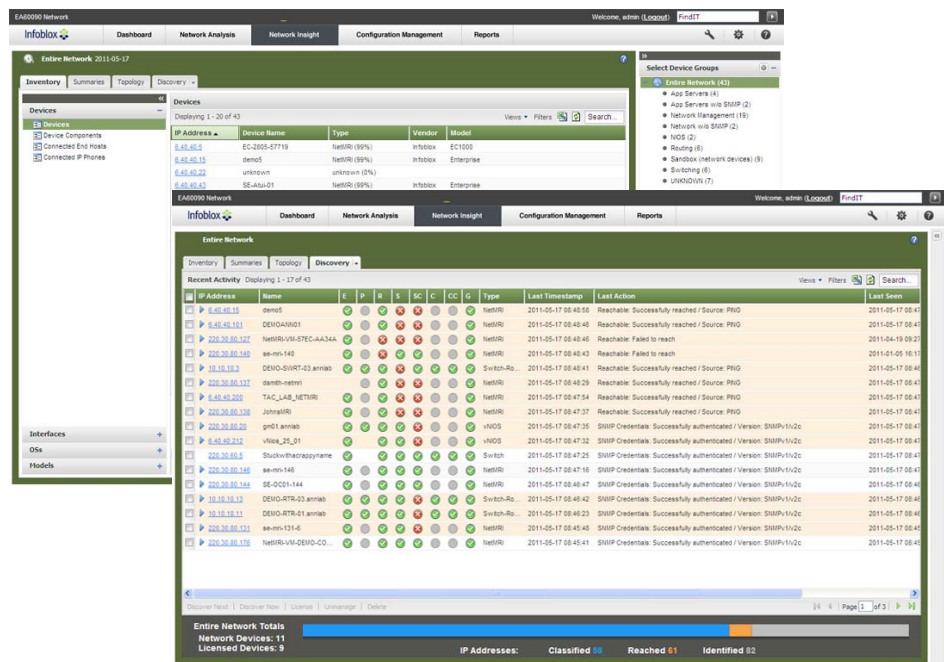
### Key Features

- Integrated network and IP address visibility and management in a single window
- Automatic network discovery for multi-vendor network devices
- Multi-perspective topology views show the relationship between device neighbors
- Tracking for Layer 2 physical information, including device, chassis components, interfaces, OSs, vendor and model type
- Updated Layer 3 logical network summaries, including routes, subnets, VLANs, HSRP/VRRP groups and ports
- Identifies exact devices currently connected to the network, and creates asset management and inventory reports
- Finds unknown or unplanned devices connected to the network, and generates automated alerts immediately
- Network-friendly discovery and importing of existing network inventory with Infoblox API
- Physical or virtual appliance-based solution deploys and implements quickly and securely
- Standard and custom inventory reporting on-demand or via recurring schedule

Instead of manually adding network components that are constantly changing, you can let Trinzic IPAM Insight synchronize critical end device information with your Infoblox IPAM database for you — in real time. Essential information — such as switch ports, IP addresses, switch port settings (duplex, speed, link state), how the host connects to VLANs and the actual defined subnets — are all accessible in the same window. Instead of cobbling together multiple views with out-of-date information, you can view the network, connections and end hosts information all within a single pane of glass.

### Dynamic Discovery, Analysis, and Reporting of Network Devices & Connections

In place of manual spreadsheets and generic ping sweeps, Trinzic IPAM Insight offers complete network discovery and inventory for multi-vendor, Layer 2 and Layer 3 networks elements. User-friendly analyses and graphical views provide rich information on network elements, including devices, VLANs, routes, routing tables, HSRP peers, subnets, OS and models.



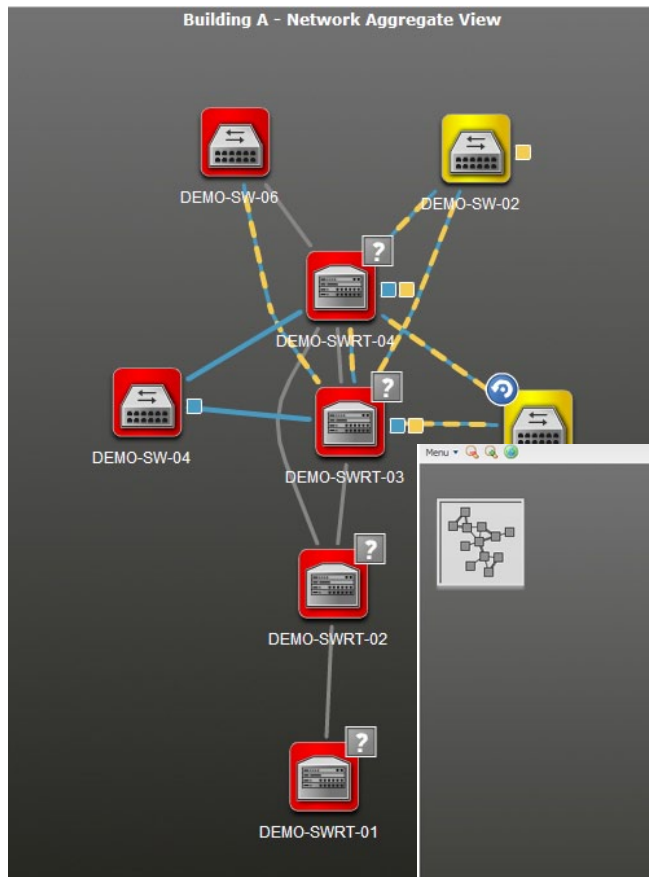
The dynamic device discovery finds all connected network devices – including new unknown devices – and provides detailed information

Trinzic IPAM Insight automatically collects information in real time and continuously keeps it up to date, making it always available for key tasks such as inventory, troubleshooting and maintenance reconciliation. Instead of just focusing on individual devices, the auto-discovery also includes the network connections, their dependencies and topology views of the entire infrastructure.

## DATASHEET

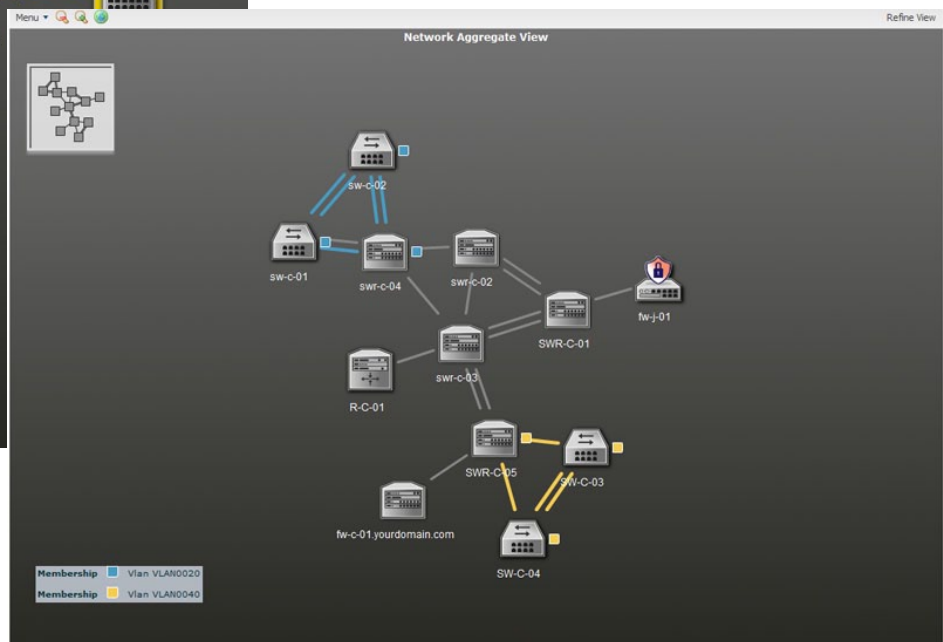
### Reduced Troubleshooting Time with Improved Visibility

Most IT teams spend the majority of their day doing unplanned work – often times to long troubleshooting times caused by incorrect or non-current information. A static Visio diagram or dusty spreadsheet can cause more havoc than it's worth.



Trinzic IPAM Insight reduces the amount of time and effort needed to troubleshoot by providing improved network visibility integrated with end host/IP address information. The solution continuously monitors network and device parameters, and automatically updates the information within the single view. Trinzic IPAM Insight automatically syncs the IP map with detailed network data in real time.

IT staff can leverage powerful topology views to see how network elements are connected and their location on the network at any given time. Another extremely useful troubleshooting tool in Trinzic IPAM Insight is its ability to see data across both the IP addresses and the associated physical elements.



The topology views are always current and help IT staff visualize the complex relationship between devices

## DATASHEET

Asset Inventory						
<b>Network:</b> NetMRIDemo <b>Date Range:</b> 2011-07-05 00:00:00 to 2011-07-05 23:59:59 <b>Device Groups:</b> Entire Network <b>Devices:</b>						
This report lists the devices meeting specific group criteria that NetMRI found to be on the network during a specific time period.						
Name	IP Address	Model	Chassis	Serial Numbers	Version	Managed?
<b>Total Device Count: 13</b>						
<b>(Managed: 13)</b>						
<b>Firewall (1)</b>						
<b>Netscreen (1)</b>						
fw-j-01	10.197.1.2	SSG5		0162022007000496	5.4.0r5.0	Yes
<b>NetMRI (1)</b>						
<b>Infoblox (1)</b>						
netmridemo2	172.16.30.51	Enterprise			6.1.1.57	Yes
<b>Router (1)</b>						
<b>Cisco (1)</b>						
R-C-01	172.16.10.6	2811		FTX1103A2C9	12.4(15)T1	Yes
<b>Switch (4)</b>						
<b>Cisco (4)</b>						
sw-c-01	172.16.20.5	catalyst2924XLv	FAA0324F07Z		12.0(5)WC16	Yes
sw-c-02	172.16.20.6	catalyst2924XLv	FAA0330LOAD		12.0(5)WC16	Yes
SW-C-03	172.16.40.5	catalyst295024G	FHK0704Z04U		12.1(22)EA10a	Yes
SW-C-04	172.16.40.6	catalyst295024G	FHK0714W01L		12.1(22)EA10a	Yes
<b>Switch-Router (6)</b>						
<b>Cisco (6)</b>						
fw-c-01.yourdomain.com	172.16.10.7	871			12.4(15)T13	Yes
SWR-C-01	172.16.10.1	catalyst37xxStack	CAT0803Z14V		12.2(40)SE	Yes
swr-c-02	172.16.10.2	1812	FOC11124UE6		12.3(14)YT1	Yes
swr-c-03	172.16.10.3	1812	FHK142476ZE		12.4(15)T13	Yes
swr-c-04	172.16.10.4	1812	FOC110551T0		12.3(14)YT1	Yes
SWR-C-05	172.16.10.5	catalyst37xxStack	CAT0803Z192		12.2(46)SE	Yes



Created on: 2011-07-05 14:50:33

### Improved Security and Compliance

Two of the initial questions asked during a network security review or compliance audit are, “What is the full complement of all of the devices on your network?” and “How do you determine when new devices are connected and what they are?” Trinzic IPAM Insight provides a detailed and authoritative view of everything that is connected to the network and, more importantly, demonstrates your security controls by automatically tracking new devices — both planned and unplanned — as they are added in real time.

Trinzic IPAM Insight automatically generates alerts when new devices are added so your IT team can either approve the new connections or immediately remove unauthorized devices to reduce negative security risks. For auditing purposes, the proactive monitoring and customizable reports meet the needs of security and compliance requirements relative to monitoring and tracking connected devices.

Scheduled and on-demand reports help with inventory management including maintenance reconciliation so you don't overpay for non-active devices

### Automated IP Address Management and Enhanced Network Discovery

In short, Trinzic IPAM Insight NetMRI empowers your network with network auto-discovery that ensures up-to-date physical, logical and connection views across your entire infrastructure. The automatic sync with the Infoblox IP address management databases correlates and presents a comprehensive view of end devices and the related network components within a single pane of glass to meet the needs for managing today's dynamic and complex environments, including the challenges of virtualization and cloud computing.

### Infoblox Product Warranty and Services

The standard hardware warranty is for a period of one year. The system software has a 90-day warranty that will meet published specifications. Optional service products are also available that extend the hardware and software warranty. These products are recommended to ensure the appliance is kept updated with the latest software enhancements and to ensure the security and availability of the system. Professional services and training courses are also available from Infoblox. Information in this document is subject to change without notice. Infoblox Inc. assumes no responsibility for errors that appear in this document.